

Plant histology and Anatomy

- * Collenchyma tissue is characterised by
- (a) Elongated cells with thickening at the corners
 - (b) Isodiametric cells with deposits of cellulose and pectin at the corners
 - (c) Elongated cells with deposits of cellulose and pectin all over the wall
 - (d) Isodiametric cells with thickening all over the cell
- Ans : b)
- * Aerenchyma is helpful in plants by
- (a) Giving flexibility to plants
 - (b) Giving mechanical strength to plants
 - (c) Promoting photosynthesis
 - (d) Providing buoyancy in hydrophytes
- Ans : d)
- * Vessels differ from tracheids
- (a) In being derived from single cell
 - (b) In having vertical rows of cells with cross walls dissolved
 - (c) In being living
 - (d) They help in the conduction of water
- Ans : b)
- * Fascicular, interfascicular and extra-stelar cambium together constitute
- (a) Lateral meristem
 - (b) Apical meristem
 - (c) Intercalary meristem
 - (d) Ground meristem
- Ans : a)
- * When protoxylem develops towards the periphery, it is called
- (a) Centripetal xylem
 - (b) Centrifugal xylem
 - (c) Endarch
 - (d) None of the above
- Ans : a)
- * Bordered pits are found in
- (a) Phloem
 - (b) Protoxylem
 - (c) Metaxylem
 - (d) Pith
- Ans : c)

* Xylem vessels and phloem companion cells are generally absent in

- (a) Ferns and angiosperms
- (b) Ferns and gymnosperms
- (c) Bryophytes and pteridophytes
- (d) Pteridophytes and thallophytes

Ans : b)

* Parenchyma cells in between xylem and phloem bundles in roots are called as

- (a) Conjunctive tissue
- (b) Complimentary tissue
- (c) Cambial tissue
- (d) None of the above

Ans : a)

* What is piliferous layer

- (a) Outermost layer of leaf with cuticle
- (b) Outermost layer of stem with lenticel
- (c) Innermost layer of root cortex
- (d) Outermost layer of root with hairs

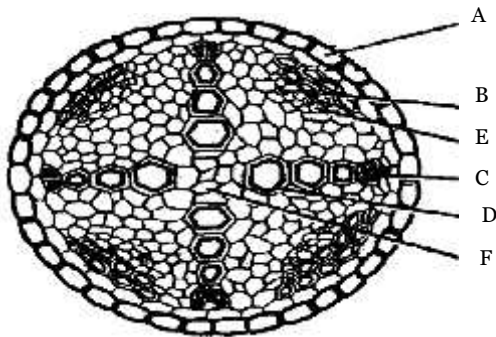
Ans : c)

* In which of the following phloem parenchyma is absent

- (a) Maize
- (b) Sunflower
- (c) Guava
- (d) Banyan

Ans : a)

* In the diagram of T.S. of Stele of Dicot Root, the different parts have been indicated by alphabets; choose the answer in which these alphabets correctly match with the parts they indicate



- (a) A Endodermis B = Conjunctive tissue
C= Metaxylem D= Protoxylem
E = Phloem F = Pith
- (b) A= Endodermis B = Pith
C = Protoxylem D= Metaxylem
E = Protoxylem F = Conjunctive tissue
- (c) A = Pericycle B = Conjunctive tissue
C = Metaxylem D = Protoxylem
E = Phloem
- (d) A = Endodermis B = Conjunctive tissue
C = Protoxylem D = Metaxylem
E = Phloem F = Pith

Ans : d)